



A survivor, one of millions of butter tubs made in Montgomery between 1870-1920.

WE CAN DO BETTER

Our consulting engineers recommended, and the MHS Board has decided to remove the Deuso Road house and build a new facility we can work in year round.

A HOME FOR HISTORY

Our new archive building will be based on a carriage barn design to blend into the neighborhood. It will provide safe storage, work, and exhibit space, and be outside the known flood zone. It will also be:

- Energy efficient,
- ADA compliant (meeting all the requirements for public access), and
- Equipped with climate and energy mitigation controls.

...they will come.

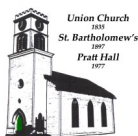
WE NEED YOUR HELP

A donation in any amount will help us meet our goal of \$350,000. Tax deductible donations can be made on our web site by selecting the Donate button on our "Donations & MHS Store" page. Checks can be mailed to the address below. Donations can be designated in Honor of, or in Memory of, people as directed.

If you have an IRA and have reached the age of 70½, you may find it advantageous to make a Qualified Charitable Distribution (QCD) to the Society. This distribution can reduce your Adjusted Gross Income and may even put you into a lower tax bracket. A QCD **must** be made by your IRA custodian directly to a qualified charity, such as the Society. If you must take a Required Minimum Distribution from your IRA, the QCD can be used to meet that requirement.

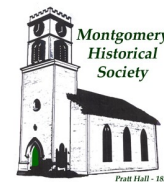
Another way to donate to the MHS, is to transfer stock, mutual fund and bond securities that have appreciated in value. By transferring these securities, you may take the current market value as a deduction on your tax return and avoid paying capital gains taxes and maybe even switch to a lower tax bracket.

Please contact us for more information and thank you for your support.



Montgomery Historical Society
P.O. Box 47 Montgomery, VT 05470
pratthall@gmail.com
www.montgomeryhistoricalsociety.org

*We are a 501.c.3 Non-profit.
Join Us and Make History!!!*



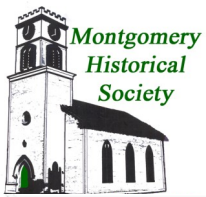
A HOME FOR HISTORY

Part of the Montgomery Historical Society mission is to collect things that help all of us understand the heritage of our community. Our first acquisition was St. Bartholomew's Church in 1974 saving it from demolition. Over time other, smaller things were acquired like a butter tub, a spool, and a packing case from the Town's mills, photographs, a thimble, toys, a 97 flood quilt; now over 1,100 items!

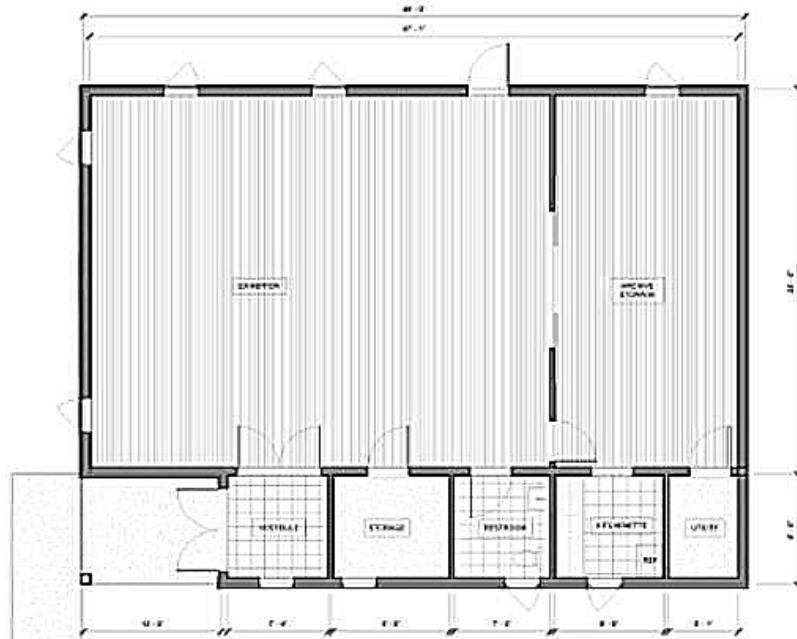
All were crammed into a small closet in the front of the church. It was the only storage space we had and while Pratt Hall is beautiful it doesn't lend itself to managing the collection, nor should it be. In fact we've made a concerted effort to preserve the building's character and appearance so people feel like they've walked into the house of worship built by Montgomery's earliest settlers.

In 2005 the Society purchased the abutting property which was once the location of the Village Store. The lawn where it once stood now hosts our Farmers Market and its small house on Deuso Road is used as our archive building. Unfortunately the building was in terrible shape. It has serious structural problems including a leaky roof, rotten trusses, and a crumbling foundation. It lacks heat, and water. Part is in a flood zone. It is not a place to safely store items and has no space to exhibit these gems of our community.

If we build it...

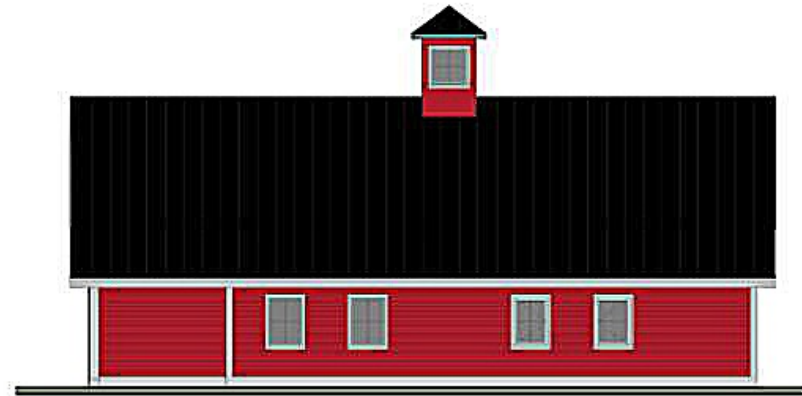


Preliminary Concept for Archival Storage and Exhibit Building



First Floor Plan

Scale: 1/4" = 1'-0"



North Elevation

Scale: 1/4" = 1'-0"



View from Deuso Road



East Elevation

Scale: 1/4" = 1'-0"

View from Main Street (Rte 118)

PROJECT: 2027
DATE: 06/24/2024
DRAWN BY: J. H. H. H.
CHECKED BY: J. H. H. H.
APPROVED BY: J. H. H. H.

THE ARCHITECT
J. H. H. H.
CROSS
CONSULTING ENGINEERS, P.C.
1000 Main Street
Montgomery, VT 05759
Tel: 802.452.1234
Fax: 802.452.1234

Plan, Elevations &
3d View
Rev. No. Date Description

Montgomery Historical Society
Montgomery, VT
Historical Society Center
North Main Street
Montgomery, VT

ARCHITECTURAL

A-1.0

Conceptual 06/24/2024