

Town of Montgomery, Vermont
A Brief Study of the 12 School Dictricts

The Vermont Legislature granted on March 15, 1780 a charter to the Town of Montgomery but it was not until spring of 1793 that the first settler arrived - Captain Joshua Clapp , a Revolutionary War soldier, and his family from Massachusetts. And thus began the educational journey for the Town of Montgomery.

Education was important to these first settlers most of whom were able to read and write. From the beginning early Town Meeting reports were gleaned for information pertaining to the areas of schooling. These are reported in a chronological order and then followed by pictures and data of the 12 known districts found in the Town of Montgomery.

March 19, 1804 - Voted on 5th article of town warning "To see if the Town will grant & vote any sum of money for schooling" & decided to raise by a tax agreement to Law twenty-two dollars for schooling in Town the ensuing year. Henry Marble with Selectmen appointed Trustees of School.

March 25, 1805 - Voted \$22.00 for schooling

Nov. 18, 1806 - Voted a Committee: Rufus Smith, James Upham & Henry Marble, to find a place to keep the school & a Master to teach it. March 24, 1806 - Voted for the school to be set up at James Uphams and that he with Adonijah Scott be a Committee to employ a Master.

March 10, 1807 - \$22.00 expended as Winter School
\$ 8.00 expended as Summer School

March 10, 1808 - \$30.00 expended for School

March 13, 1809 - \$30.00 divided between two districts - report given by Reuben Clapp, Ira Leavens, Stevem Gates & accepted by the town.

September 1809 - voted to build school in the first district - Committee of five: Henry Marble, Reuben Clapp, Steven Gates, Ira Leavens & Jonas Kingsley.

October 2, 1809 - Committee reported that a school house may be made of brick 20 ft sq with a porch for the sum of \$270.00. Town accepted report & named a Committee of three - Samuel Barnard, Henry Marble & Rufus Smith, to draft a petition to the General Assembly praying then to assist the town with power to build a schoolhouse. October - voted the school lot which in now begun by Caleb Blood & Joseph Jane be leased to them by the lawful authority of the town so long as wood burns, water runs, grass grows or the sun shines on the face of the earth for the minal (minimal) rent of 18¢ per hour - the just rent to be paid in 5 years from the first of January next.

December 4, 1809 No. of scholars ages 4 - 18
District # 1 - 38
District # 2 - 17 Total 55

March 16, 1810 - raise school tax to \$40.00

March 16, 1811 - voted to set off school district on Hill South of the Mills:
March census - District # 1 - 44
District # 2 - 32 Total 76

March 1812 School Census District # 1 - 38
 District # 2 - 29
 District # 3 - 6 Total 73

March 1813 - District # 1 Schoolhouse used for Town Meetings about this time
 - District # 2 Schoolhouse used also a few years later;
 Census of Scholars - District # 1 - 47
 District # 2 - 27
 District # 3 - 8 Total 82

1814 - \$43.00 to Schools District # 1 - 46
 District # 2 - 32
 District # 3 - 8 Total 86

March 1815 District # 1 - 55
 District # 2 - 29
 District # 3 - 11 Total 95

September 3, 1816 Voted 3rd District be joined & incorporated with the 1st
 School District

March 3, 1817 District # 1 - 48
 District # 2 - 40 Total 88

March 9, 1818 Voted to set off south part of Jonah Johnson into separate
 school district.
 Census - District # 1 - 60
 District # 2 - 46 Total 106

No listing for 1819

March 6, 1820 Census District # 1 - 64
 District # 2 - 43
 District # 3 - 15 Total 122

	<u>1821</u>	<u>1822</u>	<u>1823</u>	<u>1824</u>	<u>1825</u>	<u>1826</u>	<u>1827</u>	<u>1828</u>	<u>1829</u>
District # 1	61	62	66	49	67	64	69	75	58
District # 2	46	51	49	51	42	44	44	43	41
District # 3	15	19	18	15	18	28	28	30	36
	Henry	Janes	4	5	6	5	4	5	5
Totals	122	132	137	120	133	141	145	153	140

	<u>1830</u>	<u>1831</u>	<u>1832</u>	<u>1833</u>	
District # 1	71	70	67	68	June 4, 1833 voted 7 farms constitute a school district.
District # 2	40	52	53	54	
District # 3	39	35	33	33	
Henry Janes	8	9	33	7	
Totals	158	166	153	162	

No report on schools for 1834 and 1835 and the reason is unknown.

For two

	<u>District # 1</u>	<u>District # 2</u>	<u>District # 3</u>	<u>District # 4</u>						
1836	78	64	32		Total 174					
1837	March 6, 1837 set off new district 4									
1838	83	63	30	9	Total 185					
1839	72	66	22	14	Total 174					
	March 1839 set off S.Gates, Janes & south upon that road into another school district; set off all east of Charles Campbell East Line on Notch Road South Westfield as school district # 6.									
	Dist. # 1	Dist. # 2	Dist. # 3	Dist. # - 4	Caleb Combs					
1840	78	52	22	14	5 Total 188					
1841	March, 1841 4th District joined to 2nd. No other data available.									
1842	No data available.									
	Dist # 1	Dist. # 2	Dist. # 3	Dist. # 5	Dist. # 6 Caleb Combs					
1843	74	52	24	9	12 6					
	Total 177									
	Dist. # 1	Dist. # 2	Dist. # 3	Dist. # 5	Dist. # 6 Caleb Combs					
1844	61	50	25	18	18 7					
	Total 179									
	The Combs district was changed to the 5th district which is in Enosburg.									
1845	March 3, 1845 the northern part of district # 2 becomes District # 7; another new district also possibly established.									
	Dist. # 1	Dist # 2	Dist. # 3	Dist. # 5	Dist # 6 Dist. # 4 ?					
	75	56	26	28	17 17					
	Total 225									
1846	March 2 new school district , possibly district 9, around Richford Gore and branch off # 1.									
1847	Dist. 1	Dist. 2	Dist. 3	Dist. 4	Dist. 5	Dist. 6	Dist. 7	Dist. 8	Dict. 9	
Total	84	41	38	22	61	25	18		Met to build schoolhouse Apr. 14, 1847	
1848	Dist. 1	Dist. 2	Dist. 3	Dist. 4	Dist. 5	Dist. 6	Dist. 7	Dist. 8	Dist. 9	
Total	64	42	31	15	64	20	17	18	21	
1849	Record not available									
1850	Dist. 1	Dist. 2	Dist. 3	Dist. 4	Dist. 5	Dist. 6	Dist. 7	Dist. 8	Dist. 9	Dist. 10
Total	65	39	30	-	50	16	17	18	*	
	* Branch of Dist. 9 becomes Dist. 10 in Apr, 1850									

Rev Sewall Paine becomes Superintendent of Schools and this marks a big breakthrough in Census Reporting which continued for fifteen years until 1866.

For two years there appears to have been a school at Avery's Gore; six students in 1847 and eight students in 1851.

School Districts from 1851 through 1866

1851	District # 1	69	students	
	District # 2	47	students	
	District # 3	33	students	
	District # 4	19	students	
	District # 5	64	students	
	District # 6	21	students	
	District # 7	23	students	
	District # 8	18	students	
	District # 9	13	students	
	District # 10	11	students	District 11 formed December 11, 1851
	Total	326		
1852	District # 1	78	students	
	District # 2	43	students	
	District # 3	32	students	
	District # 4	30	students	
	District # 5	62	students	
	District # 6	19	students	
	District # 7	24	students	
	District # 8	20	students	
	District # 9	19	students	
	District # 10	2	students	
	District # 11	37	students	
	Total	366	students	
1853	District # 1	81	students	
	District # 2	48	students	
	District # 3	26	students	
	District # 4	36	students	
	District # 5	48	students	
	District # 6	21	students	
	District # 7	22	students	
	District # 8	no students reported		
	District # 9	16	students	
	District # 10	5	students	
	District # 11	38	students	
	Total	341		
1854	District # 1	77	students	
	District # 2	45	students	
	District # 3	33	students	
	District # 4	33	students	
	District # 5	51	students	
	District # 6	24	students	
	District # 7	28	students	
	District # 8	20	students	
	District # 9	15	students	
	District # 10	8	students	
	District # 11	35	students	
	Total	369		

1855	District # 1	74	students
	District # 2	58	students
	District # 3	22	students
	District # 4	34	students
	District # 5	59	students
	District # 6	23	students
	District # 7	19	students
	District # 8	27	students
	District # 9	15	students
	District # 10	5	students
	District # 11	<u>34</u>	students
	Total	370	

1956	District # 1	73	students
	District # 2	56	students
	District # 3	28	students
	District # 4	40	students
	District # 5	36	students
	District # 6	23	students
	District # 7	23	students
	District # 8	34	students
	District # 9	18	students
	District # 10	10	students
	District # 11	<u>36</u>	students
	Total	377	

1857	District # 1	75	students
	District # 2	47	students
	District # 3	23	students
	District # 4	45	students
	District # 5	54	students
	District # 6	28	students
	District # 7	22	students
	District # 8	18	students
	District # 9	21	students
	District # 10	8	students
	District # 11	<u>39</u>	students
	Total	380	

1858	District # 1	81	students
	District # 2	53	students
	District # 3	18	students
	District # 4	43	students
	District # 5	48	students
	District # 6	28	students
	District # 7	27	students
	District # 8	18	students
	District # 9	24	students
	District # 10	12	students
	District # 11	<u>29</u>	students
	Total	381	

1859 District # 1 86
 District # 2 52
 District # 3 19
 District # 4 50
 District # 5 65
 District # 6 22
 District # 7 18
 District # 8 22
 District # 9 23
 District # 10 10
 District # 11 no students listed
 District # 12 established March 1, 1859; no students listed
 Total 369

1860 District # 1 52
 District # 2 40
 District # 4 50
 District # 5 37
 District # 6 14
 District # 7 13
 District # 8 25
 District # 9 17
 District # 10 11
 District # 11 no students listed
 District # 12 27
 Total 320

1861 District # 1 48
 District # 2 47
 District # 3 48
 District # 4 37
 District # 5 51
 District # 6 26
 District # 7 21
 District # 8 13
 District # 9 26
 District # 10 23
 District # 11 no students listed
 District # 12 36
 Total 376

1862 District # 1 70
 District # 2 48
 District # 3 50
 District # 4 39
 District # 5 34
 District # 6 29
 District # 7 10
 District # 8 13
 District # 9 15
 District # 10 26
 District # 11 no students listed
 District # 12 31
 Total 365

1863	District # 1	62
	District # 2	48
	District # 3	53
	District # 4	37
	District # 5	36
	District # 6	34
	District # 7	12
	District # 8	20
	District # 9	20
	District # 10	23
	District # 11	no students listed
	District # 12	<u>32</u>
	Total	377

1864	District # 1	52
	District # 2	40
	District # 3	46
	District # 4	39
	District # 5	36
	District # 6	41
	District # 7	11
	District # 8	14
	District # 9	17
	District # 10	24
	District # 11	70
	District # 12	<u>26</u>
	Total	416

1865	District # 1	52
	District # 2	53
	District # 3	61
	District # 4	46
	District # 5	37
	District # 6	38
	District # 7	no students listed
	District # 8	no students listed
	District # 9	19
	District # 10	28
	District # 11	73
	District # 12	<u>31</u>
	Total	438

1866	District # 1	50
	District # 2	45
	District # 3	42
	District # 4	49
	District # 5	50
	District # 6	41
	District # 7	*
	District # 8	no students listed
	District # 9	13
	District # 10	25
	District # 11	73
	District # 12	<u>38</u>
	Total	426

* On September 4, 1866 District # 7 was divided: six families went to District 1, six families went to District 2 and two families to District 9.

Numerous changes of families from one district to another often altered the various school districts. The Beers Atlas of 1871 shows the location of the 12 school districts found in the Town of Montgomery.

December 1, 1894 voted to build a school in District 2.

March 5, 1894 voted School Directors to purchase suitable site to build a school at Hectorville which was erected by 1896.

October 28, 1899 voted to raise and not exceed \$4000.00 to purchase land and erect Center school house.

March 5, 1901 - what to do to dispose of the school near John D. Head's.

March 4, 1902 repair East Hill Schoolhouse ; Directors instructed to try and build anew.

The rest of the information comes from looking through old town meeting reports and not the town clerk's records.

Feb. 1895 - Nine school districts - District # 10 transferred to District # 1; voted to erect Hectorville school

1896 - School had been erected at Hectorville and ten school districts accounted for.

1897 - 10 schools supported

1898 - 10 schools supported; no school held on North Hill (pupils sent to Village) or at farther school (pupils sent to Four Corners).

Superintendent's report:

"The pupils in the Village School are most proficient; those in the schools at the Notch, West Hill; Head District and perhaps Hectorville stand somewhat below these; the other schools are certainly considerably lower in scholarship than they should be".

1900 - special town meeting held Oct. 28, 1899 to obtain and choose location for new school at Center; this issue came up again to be acted upon at town meeting. Report = supported 8 schools.

1901 - voted on disposition of old schoolhouse & lot at Center
voted on disposition of old schoolhouse near J.D. Head's
Eight schools supported - Village, Center, Hill West, Four Corners, South, Hectorville, Notch and East Hill (the last two school buildings mentioned found to be unsuitable - but nothing was done.

1902 - to see if town will vote to build or repair East Hill School. To see if the town will vote to make disposition of old Schoolhouse & lot at Center.

1906 - Voted to rebuild Four Corners schoolhouse destroyed by fire. Following schools mentioned: Center, East Hill, South, Hill West, Cushing (4 Corners) Hectorville, Notch & Village.

1909 - Warning to see if town will vote to better facilities at Hectorville School (which was somewhat congested).

1910 - Enrollment winter term - Center 139, Village 93, Hectorville 56 and Rural 73 (this included East Hill, Cushing, Notch, Hill West, South) for a total of 361.

First year high school offered at Center for 8 students.

1911 - Enrollment - winter term - Center 105, Village 92, Hectorville 49, Rural 63 for a total of 309.

Disastrous Dec 24, 1909 fire, many families left town.

1912 - 15 No School Report in Town Meeting Agenda - separate meeting were held each year to cover educational educational matters.

August 14, 1914 - Hutchins Mill burned.

1916 - Number of Teachers - Village 3, Notch 1, South 3, Hectorville 2, Hill West 1, East Hill 2, Center 6. More room needed at Center School.

1918 - Warning "to see in the town will vote to build a schoolhouse in the Cushing District and if so, what sum." Two schools have been discontinued and a 3 teacher four year junior high school established at the Center. Junior high described as "a grouping of 6th, 7th, 8th, 9th + 10th grades into a unit, wherein, by a greater variety of subjects + freedom of choice, pupils may be given a bird's eye view of the fields of knowledge + wherein, by prevocational subjects (agriculture, shop work, Home ec., commercial subjects etc.) pupils may find out the kind of work for which they have the greatest aptitude." Later, pupils might go on to Senior High.

1919 - Schools mentioned: Notch, Hectorville, South, Center, and Village. East Hill was opened for the winter term.

1920 - East Hill School closed due to no teachers; pupils transported to the Center.

1921 - South School pupils transported to Hectorville for fall term - difficulty in finding rural teachers.

1922 - Schools mentioned: Notch, Hectorville, South, West Hill, Center and Village.

1923 - Passed on Dec. 10, 1923 at a special meeting "town will vote to build an addition to Center schoolhouse - elect a special committee to do so".

1924 - New schoolhouse built.

1927 - Schools mentioned: Village, Center, Hill West, Hectorville, East Hill & Notch - although whether the last was functioning is questionable. This is the last mention of the Notch School.

1928 - 36 Five schools mentioned: Village, Center, East Hill, South & West Hill

1937 - Average cost per separate school: Center \$9300.00, Village \$2500.00, South \$600.00, West Hill \$600.00 East Hill \$600.00.

1939 - Question of whether or not to continue grade 10.

Reapportionment for funds: Center \$9727.88, Village \$2000.00, South \$1145.00, Hill West \$ 1175.00 & East Hill \$1180.00.

Summary of Expenditures for Last School Year:
July 1, 1938 to July 1, 1939

Teachers Salaries:

Superintendent E.F. Green	\$684.82	Kathleen Smith	\$630.00
H.A. Keniston	\$1600.00	Marjory Potter	\$665.00
Eleanor Holleran	\$950.00	Hazel Stearns	\$700.00
Gretchen Keelan	\$760.00	Alice Dalton	\$700.00
Bertha Larabee (substitute)	\$ 41.90	Irene Scott	\$700.00
Robina Randall	\$630.00	Dorothy Ward	\$595.00
Grace Ellsworth	\$630.00		

School Committee:

Wallace C. Domina. Chairman
Dr. D.K. Keelan
Elsie G. Clapp, Clerk

1940 - 45 Last years mentioning the five school.

1946 - 47 Some sort of consolidation of schools takes place but the information in town meeting reports is lacking in any facts.

1947 - through 1961 the number of students are enumerated for grades 1 through 8 for the Center and Village Schools.

1962 - Vote to close the Village School.

1963 - Total enrollment for the one school - Center School in grades 1 through 8 was 139.

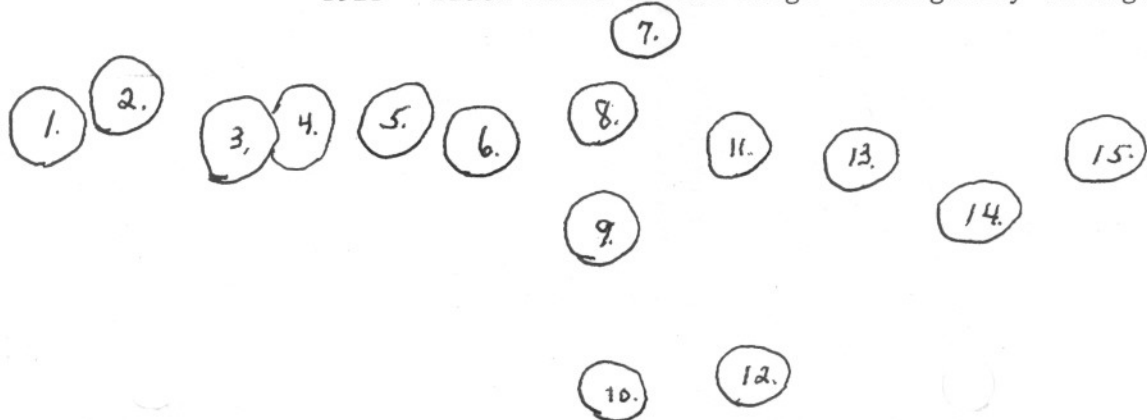
Various School Pictures in the Town of Montgomery



Brick School at Montgomery Village. Dr. D.J.Keelan's on the left and his old office at the right was later removed.



1921 - Black Falls School Barge - Montgomery Village



1. Phyllis Smith
2. Laura Jewett
3. Lee Sylvester
4. Laura Holton
5. Lawrence Sylvester
6. Wellington Farrar
7. James Smith, driver
8. Madeline Smith
9. Wilbur Farrar
10. Martha Smith
11. Raymond Smith
12. Hugh Jewett
13. Harold Smith
14. Gerald Sylvester
15. Gerald Sylvester



Montgomery Village School
1911 - 12

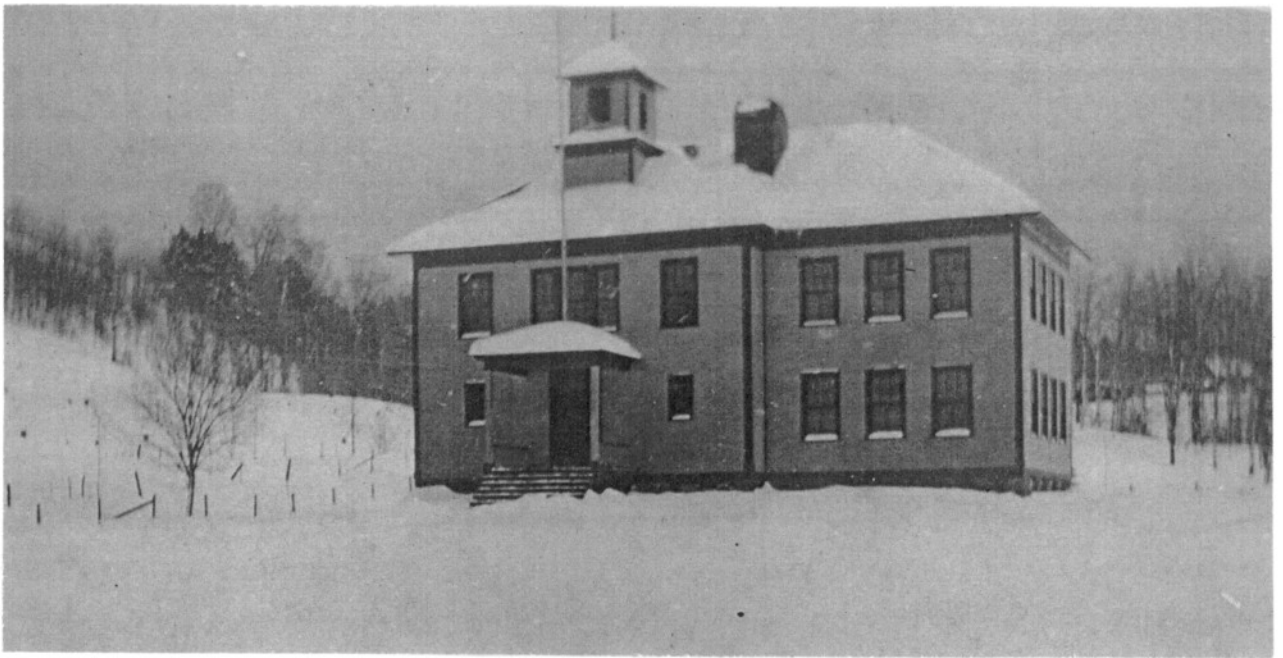


Montgomery Village School
As it appeared in 1940

The Montgomery Village School site was located where the Montgomery Schoolhouse Toy factory was located.



MONTGOMERY CENTER GRAMMAR SCHOOL
MAX W. JOLLEY. Principal
WINTER TERM
1909-10



Henry Barber
 Angelina Benoit
 Mollie Brennan
 Lillian Buskey
 George Burnham
 Mark Clapp
 Maude Demar
 Frances Farnsworth
 Fred Foster
 Margaret Gardyne
 Dorothy Gardyne

Mabel Jewett
 Goldie Jewett
 Myman Hall
 Albert Lamore
 Hurbert Lumbr
 Harvey Lumbr
 Elise Lumbr
 Wallace Lumbr
 Ada Longtin
 Mamie McElroy
 Gladys McElroy

Jerome McElroy
 Napoleon Meunier
 Merle Pease
 Harold Pease
 Lela Porter
 Gratia Sturges
 Alexander Viète



Students named on page 15.



The Graduating Class of
Montgomery Center Grammar School
request your presence at the

Commencement Exercises

Friday Evening, June Nineteenth
at eight o'clock

Gardyne's Hall



Annual Commencement
Montgomery Center Grammar School
June 19th, 1914

Prayer.....	Rev. G. F. Tubbs
Greetings	Graduates
Salutatory and Essay—"The Self Made Man".....	
.....	LEONARD C. WILSON
Recitation—"The Two Portraits".....	HAZEL L. BROOKS
Class Prophecy.....	MARION H. GARDYNE
Essay—"Be Cheerful".....	ADA N. COLNETT
Solo—"The Chapel in the Mountains".....	BLANCH BARBER
Recitation—"A Legend of Bregenz".....	FLORENCE H. LA FOUNTAIN
Class Similie.....	CRETA M. MARR
Class Poem.....	HELEN K. McELROY
Recitation—"The Leak in the Dyke".....	MINNIE G. NEU CITY
Song—"Joys of Spring".....	Graduates
Essay—"Singleness of Purpose".....	MARY R. CENTEBAR
Recitation—"The Story of a Stowaway".....	BEULAH G. BROOKS
Class History.....	GLADYS M. PORTER
Recitation—"A Rainbow".....	DOROTHA B. MESSIER
Class Will.....	MARGUERITE H. HALL
Essay and Valedictory—"Never Despair".....	JENNIE M. BERRY
Presentation of Diplomas.....	Prof. J. V. Sturvetant
Song—"Farewell Dear School".....	Graduates
Benediction.....	Rev. G. F. Tubbs

Program

Prayer.....Rev. G. F. Tubbs
 Greetings Graduates
 Salutatory and Essay—A Self Made Man.....
LEONARD C. WILSON
 Recitation—The Two Portraits...HAZEL L. BROOKS
 Class Prophecy.....MARION H. GARDYNE
 Essay—Be Cheerful.....ADA N. COLNETT
 Solo—The Chapel in the Mountains.....
BLANCH BARBER
 Recitation—A Legend of Bregenz.....
FLORENCE H. LA FOUNTAIN
 Class Similie.....CRETA M. MARR
 Class Poem.....HELEN K. McELROY
 Recitation—The Leak in the Dyke.....
MINNIE G. NEU CITY
 Song—Joys of Spring.....Graduates
 Essay—Singleness of Purpose...MARY R. CENTEBAR
 Recitation—The Story of a Stowaway.....
BEULAH G. BROOKS
 Class History.....GLADYS M. PORTER
 Recitation—A Rainbow.....DOROTHA B. MESSIER
 Class Will.....MARGUERITE H. HALL
 Essay and Valedictory—Never Despair.....
JENNIE M. BERRY
 Presentation of Diplomas...Prof. J. V. Sturvetant
 Song—Farewell Dear School.....Graduates
 Benediction.....Rev. G. F. Tubbs

Class Motto:
Never despair

Class Colors:
 Purple and Gold.

Class Flower:
 Pink and White Carnation.

Graduates:

BLANCH BARBER	FLORENCE HAZEL LA FOUNTAIN
JENNIE MARY JANE BERRY	CRETA MARGARET MARR
ELSIE LULA BROWN	HELEN KATHERINE Mc ELROY
HAZEL LOUISE BROOKS	DOROTHA BETSEY MESSIER
BEULAH GRACE BROOKS	VERSA JESSIE MURRAY
MARY RUTH CENTEBAR	MINNIE GRACE NEU CITY
ADA NELLIE COLNETT	GLADYS MARTHA PORTER
MARION HELEN GARDYNE	LEONARD CHARLES WILSON
MARGUERITE HAMILTON HALL	

Class Officers:

President, Leonard C. Wilson
 Vice President, Marguerite H. Hall
 Secretary, Jennie M. Berry
 Treasurer, Gladys M. Porter

School Board

Chairman and Clerk of Board, Court H. Foley
 Superintendent, Dr. D. J. Mc Keelan
 Director, Charles Farnsworth

Principal, Prof. J. V. Sturvetant.
 Principal of Grammar School, Mabel V. Ladd.



Main Street, East Montgomery Center, Vt.

C. A. Gardyne's Series

Montgomery Center School c 1920

First row - left to right

1. _____ 2. Eleanor Fields, 3. Maxine Parker, 4. Clara Centerbar,
 5. Louise Delaire, 6. _____, 7. Larry Labelle, 8. _____ Labelle,
 9. _____ Labelle, 10. Joe Scott

Second Row

1. Harriet Roberts, 2. _____, 3. Beula Kirby, 4. Clara Brunton,
 5. Ruth Johnson, 6. Lillian Busky, 7. Louis Morrison, 8. Halle Scott,
 9. Evelyn Levis

Third Row

1. Frances Rushford, 2. Dorothy Wright, 3. Ida Davis, 4. M. Tatro,
 5. Margaret O'Hear, 6. Dorothy Harnois, 7. _____

Fourth Row

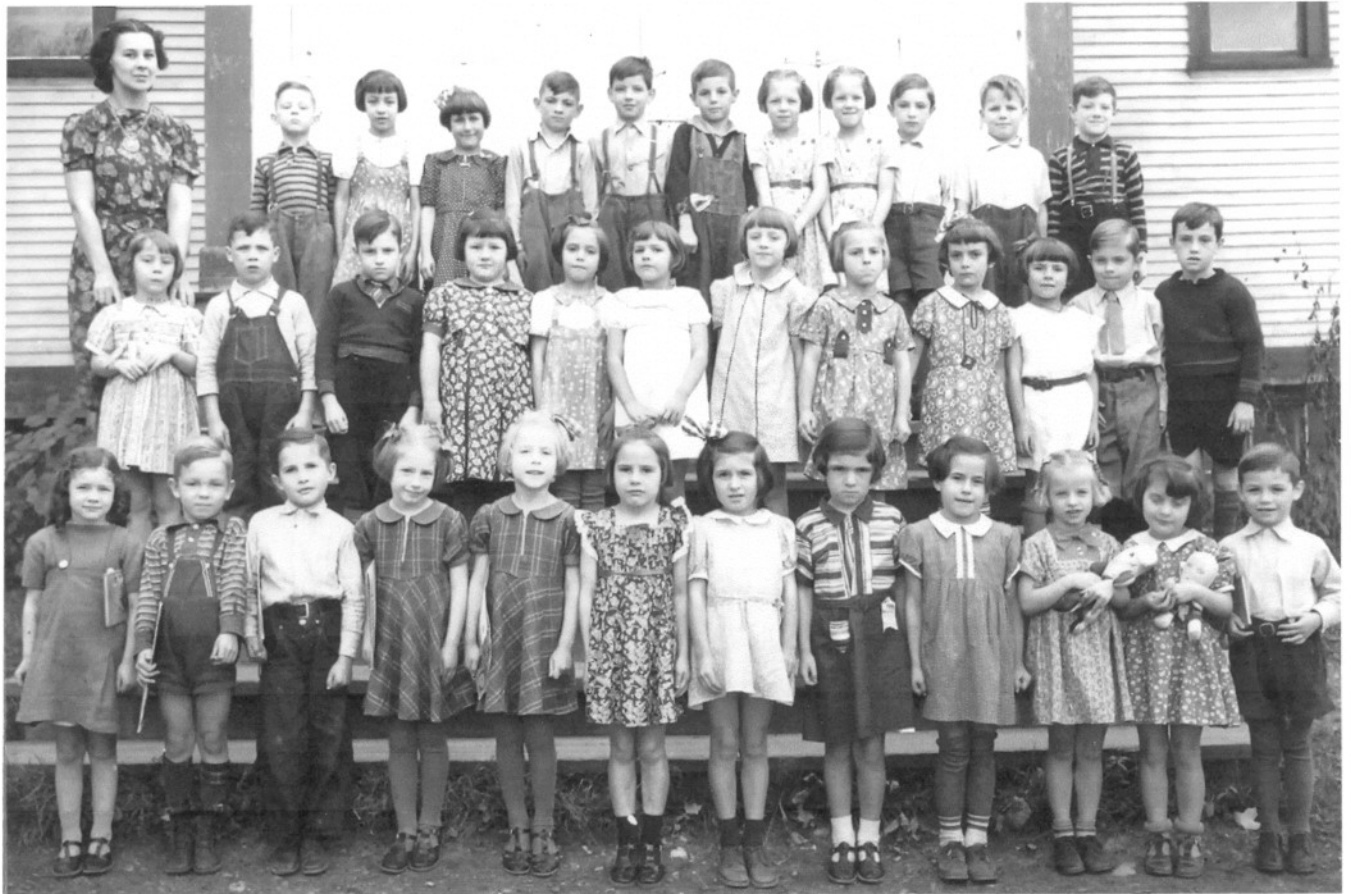
1. Eleanor Parker, 2. _____, 3. Cedric Brooks, 4. Roger Bombard,
 5. Clyde Simmons, 6. Winifred Ferre, 7. Edith Simmons, 8. Blanche Harnois
 9. _____

Top Row

1. Kenneth Morrison, 2. Dorcas Dodge, 3. Clayton Deuso, 4. Ralph Simmons,
 5. _____ Durgan - teacher, 6. Elsie Clapp - teacher, 7. Perly Chosa,
 8. Raymond George - Principal, 9. _____, 10. Clifford Domina,
 11. P. Johnson

Montgomery Center School 1930's

Teacher - Irene Scott



Row 1 - left to right

1. Bena St. Onge
2. George Larose
3. Mitchel Demar
4. Shirley Davis
5. Joyce Davis
6. Mary Ida Tatro
7. Eleanor Elkins
8. Yvonne Domina
9. Mary Jane Boucher
10. Beverly Brooks
11. Marion Snider
12. _____

Row 2 left to right

1. Charlott Elkins
2. _____
3. Harold Eldred
4. Mary Bonnett
5. Lorraine Sylvester
6. _____
7. Carol Baker
8. Jeanette Larose
9. Barbara Snider
10. Rena Pronto
11. _____
12. Pete Farrer

Row 3 - left to right

1. _____
2. Pauline Lamore
3. Eleanor Lumbra
4. Ed Domina
5. Didin Green
6. _____
7. _____ Bonnette
8. _____ Bonnette
9. Lawrence Greenwood
10. Arnold Lumbra
11. Arthur St. Onge

Montgomery Center Junior High School - 1930's

Montgomery Center School - grades 1 - 12
1932 - 33

Montgomery Center School Grades 1 and 2
1936



Row 1 - left to right

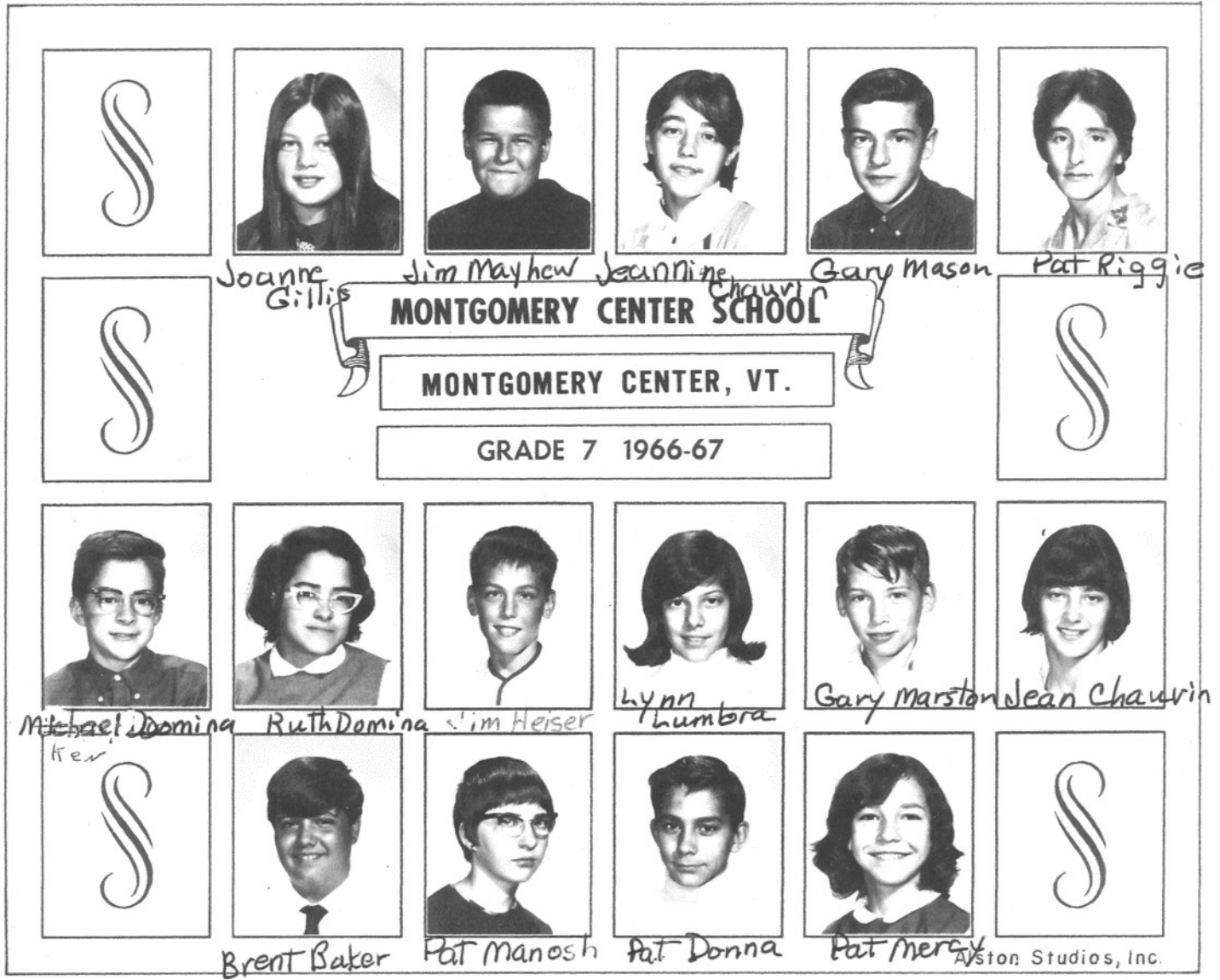
1. _____
2. Alethe Martel
3. Elaine Lumbra
4. _____
5. Gerold Domina
6. _____
7. Joyce Clapp
8. Gala Foster
9. Ami Lamore
10. _____ Gauthier
11. Beverly Brooks
12. Marjorie Rogers

Row 2 - left to right

1. _____
2. Leo Godin
3. Donald Lumbra
4. _____
5. _____
6. Tatro or Sylvester
7. _____
8. Connie Tatro
9. _____
10. John Tatro
11. _____

Row 3 - left to right

1. Mary Ida Tatro
2. Elaine Kennette
3. Eleanor Elkins
4. Donald Martel
5. Jeanette Lortie
6. Antoinette Lorie
7. Orson Tatro
8. Lawrence Greenwood
9. Fillias Farrar
10. Violet Tracy
11. Rita Larose



Good-bye Montgomery Center Elementary School

October 15, 1995



On July 3, 1902 George W. Wright sold one quarter of an acre of land on East Hill to the Town of Montgomery for forty dollars. On this site the East Hill School (currently The Belfry) and along with a number of one room schoolhouses in Montgomery it flourished for many years with one exception. In 1920 no teacher could be found so the East Hill School District children were transported by barge to the Montgomery Center School. Following the Great Depression in 1936, due to the closing of mills and a decline in population, the East Hill School closed its doors.



Two students in this picture have been identified; those standing in the second row the 8th girl is Lela Centerbar and the 10th girl is her sister Mary Centerbar.

Note that a number of the children are not wearing shoes. Lunch boxes in the foreground are actually lard buckets.



On West Hill the first school had been built of logs which burned the night of December 13, 1905. The following year a new schoolhouse was built at Four Corners on the Montgomery side. Percy Shangraw began his education here and later became the Chief Justice of Vermont's Supreme Court.

Known teachers who taught at this school were: Mary Messier, Pearl Hodges, Flora Jenne, Madge Goodspeed, Miss Mac Leon, Hilda Tessier, Hazel Rockwell, Sadia Hawkins, Donna Scott, Charline Strait, Audrey Lake, Mae Ready, Mr. Safford and Rose Brady.

West Hill School 1916



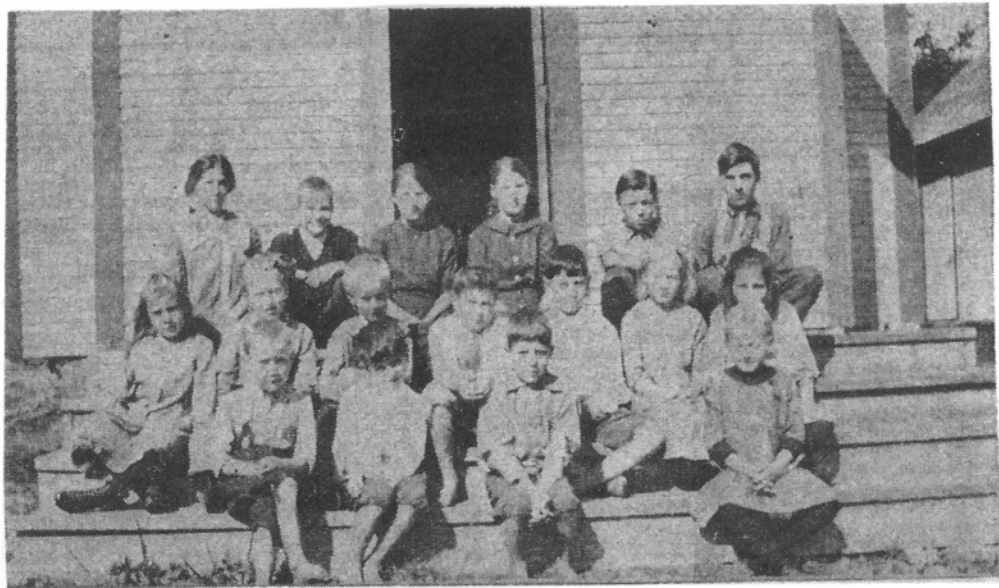


Homestead on West Hill of Percy L. Shangraw, Chief Justice of the Vermont Supreme Court circa 1915.



Hillwest School

Enosburg side



Pupils pictured c 1916

Front Row 1 to r Wellington (Manny) Wetherby, George Sylvester, Ernest Potvin
Retta Wetherby

Second Row 1 to r Martha Wetherby, Ruby Wetherby, Leon Wetherby, Paul Ariel,
Francis Potvin, Ellen Wetherby, Marie Potvin

Back Row 1 to r Mae Adriel, George Wetherby, Ruth Wetherby, Annie Wetherby,
Gerald Broe, Arthur Wetherby

The Town voted March 5, 1894 that the School Directors purchase a suitable site to build a school at Hectorville: the school was erected in 1896.



Lorgene Beneway - teacher

First Row 1 to right _____, _____, Fred Coutenware, Willard Daniels, _____, _____, Carl Newcity, Lizzie Lumbra, _____, Jesse Bonnet, John Tatro, Harvey Lumbra, _____, Fred Touchette, Albert Lumbra, Roy Sabran, Harvey Brooks, _____, _____, Willard Manosh, _____, M. Manosh, _____, _____, Dot Bazzou, _____

Second Row 1 to r _____

Fourth Row 1 to r _____

Fifth Row 1 to r _____



Hectorville School circa 1914

Boys seated in front - not identified

Row 2 1 to r 1. Enough Longe, 2. _____, 3. _____, 4. Ada Tatro,
5. Hettie Martel, 6. Myrtle Tatro

Row 3 1 to r 1. _____, 2. Celia Tatro, 3. _____ Owen, 4. Eva Domina,
5. Mildred Manosh, 6. Jessie Lumbra, 7. _____,
8. Florence Touchette, 9. Felix Bonnet, 10. _____ Owen

Row 4 1 to r 1. Gladys Kennet, 2. Mildred Touchette, 3. Versa Murray,
4. Lizzy Lumbra, 5. Gisele Mason, 6. Minnie Kennet, 7. Agnes
Benoit

Top Row 1 to r 1. Orlin Mason, 2. Roy Brooks, 3. Minnie Newcity, 4. Beulah Brooks,
5. Dora Tatro, 6. _____, 7. Noa Longe, 8. Skag Tatro,
9. Vergie Gonyea



Hazen's Notch School

Opened circa 1896
Closed 1927

Hazen's Notch School was a tough district in which to teach and therefore teachers did not remain there for long. Most teachers at the time resided at the home of Emile Rossier.

Beginning in 1922 Will Stevens transported by horse drawn barge students to the Montgomery Elementary School.



An early picture of students at the Hazen's Notch School

Cort Foley, teacher in 1896, had the following students in school:

Morton Dodge	Anna Dodge	Mable Dodge
Agnes Dodge	Charley Dorge	Martha Chaplin
Carrie CHaplin	Carl King	Carmi King
Paul Rossier	Mable Rossier	Leslie Gurten
Malandri Gurten	Jimmie Goad	Fred Goad
girl Flood	girl Flood	Willie Wade
Laura Goad	Mabel Earl	

Mary Messier, teacher in 1897, had the same students as above and with the following additions:

Ephriam Lumbra	John Lumbra	Mitch Gurten
Ida Gurten	Otis King	Harold Rossier
Wheeler Lumbra,	Homer Lumbra	Philip Dodge

Glenna Holbrock, teacher in 1898, had the same students as above with the following additions:

Lawrence Rossier

Howard Chapin

Teachers who had taught at the Hazen's Notch School:

Anna Barnes

Miss Bixton

Fred Campbell

Lottie Campbell

Martha Centerbar

Miss Chamberlain

Philip Chaplin

Roswell Chaplin

Ada Colnette

Hazel Colnette

Sheridan (Sarp) Dow 1914 - 15 The School Directors had been having difficulty keeping teachers at the Notch School because of student behavior. They decided to try a different tactic hoping for good results. They persuaded Sheridan (Sarp) Dow, a full time logger working up on Jay Mountain, to take over the school. Sarp, a very large muscular person with a dry sense of humor, agreed to give teaching a try. He reported to the school, sought out the biggest boy in the class and proceeded to "kick the stew out of him". There were no more discipline problems at the Notch School. *

Cort Foley 1896

Glenna Holbrock 1898

Mable Laplante

Viola Laplante

Corlis Lumbra

Marion Lumbra

Marion Messier 1897

Miss McKensie

Mr. Safford

Miss Scott

Miss Stanhope circa 1916

Laura Stevens

* The compiler knew Sarp Dow very well.