



1



2



3



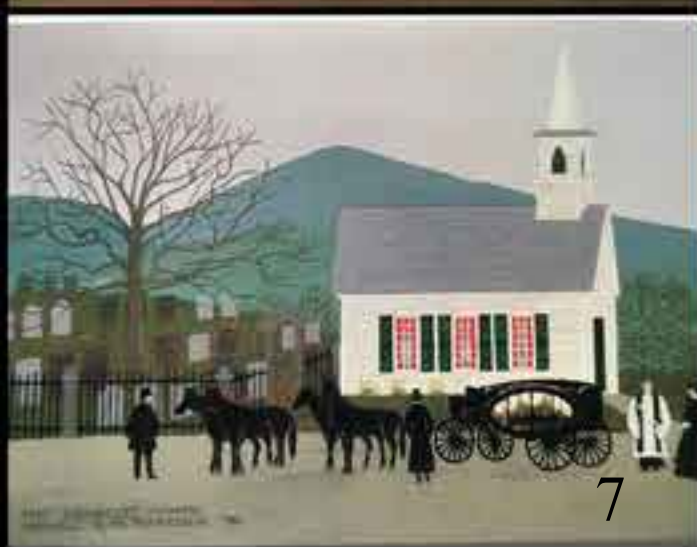
4



5



6



7



8



Paintings by Rev. Harold Babcock

Montgomery artist, the Reverend Harold Babcock, produced numerous oil on board paintings based on his recollections of his life in New England and in particular Montgomery, Vermont. Painting in the "Primitive" style familiar to many in Grandma Moses' works, Harold's landscapes contain many familiar buildings, landmarks, and events presented in a uniquely stylized composition. Many feature the Jay mountains in the background as seen from his family's Montgomery farm but with different buildings in the foreground. His painting of St. Bartholomew's, now Pratt Hall, shows the Jays in the background and other village houses set in imagined perspectives. His work evokes a time past with fondness and a tinge of longing.

These cards were produced under the supervision of the artist and donated to the Montgomery Historical Society to use for fundraising purposes. Our thanks to Harold and Carolyn.